

Factsheet

RACK-SYSTEM 180 RS

PCB Handling RS180

Product number
2518.000.992

Product name
Slotted wall 300



Ext. dimensions: 255x22x180 mm

Weight (g): 377 g

Material: PP

No. per pack: 32 pcs

Ext. dimensions: 25.5x2.2x18 cm

Weight (kg): 0.38 kg

Color: black ESD

No. per pallet: 1024 pcs

without base stop
unstrengthened



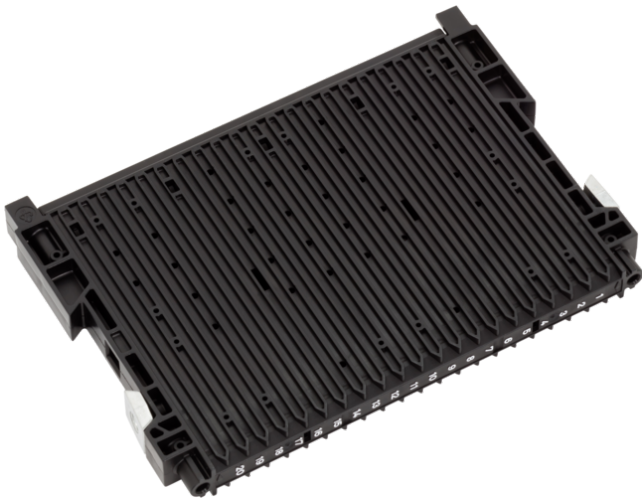
Factsheet

RACK-SYSTEM 180 RS

PCB Handling RS180

Product number
2518.022.992

Product name
Slotted wall 300



Ext. dimensions: 255x22x180 mm
Ext. dimensions: 25.5x2.2x18 cm
with base stop type 022
unstrengthened

Weight (g): 406 g
Weight (kg): 0.41 kg

Material: PP
Color: black ESD

No. per pack: 32 pcs
No. per pallet: 1024 pcs



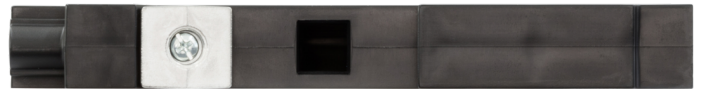
Factsheet

RACK-SYSTEM 180 RS

PCB Handling RS180

Product number
3518.000.992

Product name
Slotted wall 400



Ext. dimensions: 355x22/32x180 mm
Ext. dimensions: 35.5x22/32mmx18 cm
without base stop
unstrengthened

Weight (g): 483 g
Weight (kg): 0.48 kg

Material: PP
Color: black ESD

No. per pack: 24 pcs
No. per pallet: 768 pcs



Factsheet

RACK-SYSTEM 180 RS

PCB Handling RS180

Product number
3518.022.992

Product name
Slotted wall 400



Ext. dimensions: 355x22/32x180 mm
Ext. dimensions: 35.5x22/32mmx18 cm
with base stop type 022
unstrengthened

Weight (g): 532 g
Weight (kg): 0.53 kg

Material: PP
Color: black ESD

No. per pack: 53 pcs
No. per pallet: 848 pcs



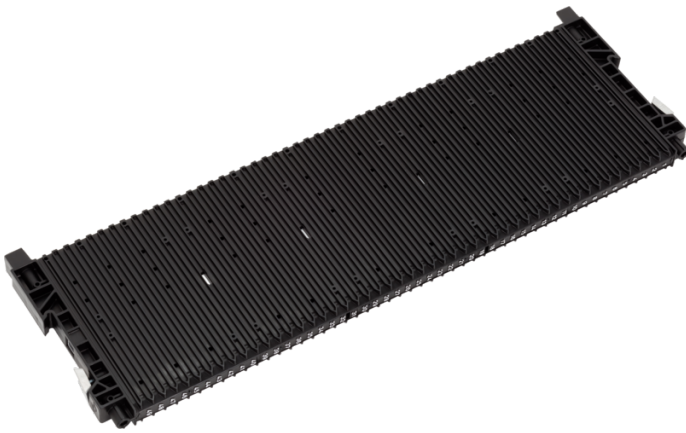
Factsheet

RACK-SYSTEM 180 RS

PCB Handling RS180

Product number
5518.000.992

Product name
Slotted wall 600



Ext. dimensions: 555x22/25x180 mm
Ext. dimensions: 55.5x22/25mmx18 cm
without base stop
strengthened

Weight (g): 767 g
Weight (kg): 0.77 kg

Material: PP
Color: black ESD

No. per pack: 16 pcs
No. per pallet: 512 pcs



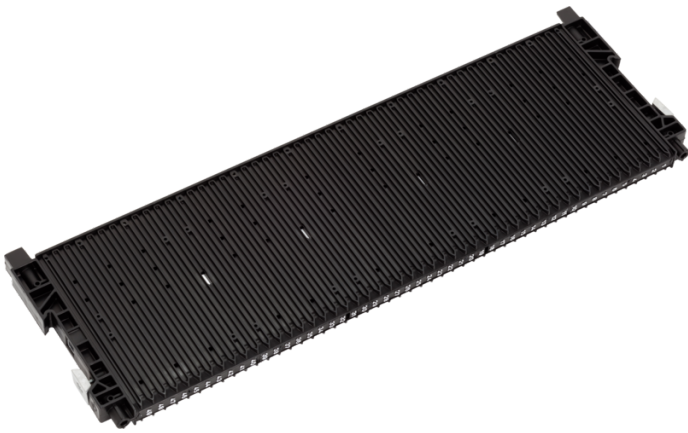
Factsheet

RACK-SYSTEM 180 RS

PCB Handling RS180

Product number
5518.025.992

Product name
Slotted wall 600



Ext. dimensions: 555x22/25x180 mm
Ext. dimensions: 55.5x22/25mmx18 cm
with base stop type 025
strengthened

Weight (g): 820 g
Weight (kg): 0.82 kg

Material: PP
Color: black ESD

No. per pack: 16 pcs
No. per pallet: 544 pcs

